

# VITALISING ICT RELEVANCE IN AGRICULTURAL LEARNING

**University of Banja Luka**

*Jelena Rožić*



**Kick-off meeting**

*Banja Luka, 21-23.01.2020.*

*Disclaimer: The European Commission support for the production of this presentation does not constitute an endorsement of the contents which reflects the views only of the authors, and the Commission cannot be held responsible for any use which may be made of the information contained therein.*

Co-funded by the  
Erasmus+ Programme  
of the European Union



# Banja Luka

- Educational, cultural, administrative center of the Republic of Srpska



**180.000  
Citizens**



# University of Banja Luka - General information



- Founded on **7 November 1975**
- It is the largest university in **the Republic of Srpska**
- **17 faculties, 147 study programmes on all three cycles**
- **Around 15.000 students**
- **Around 1.500 employees (2/3 academic staff and 1/3 administrative staff)**



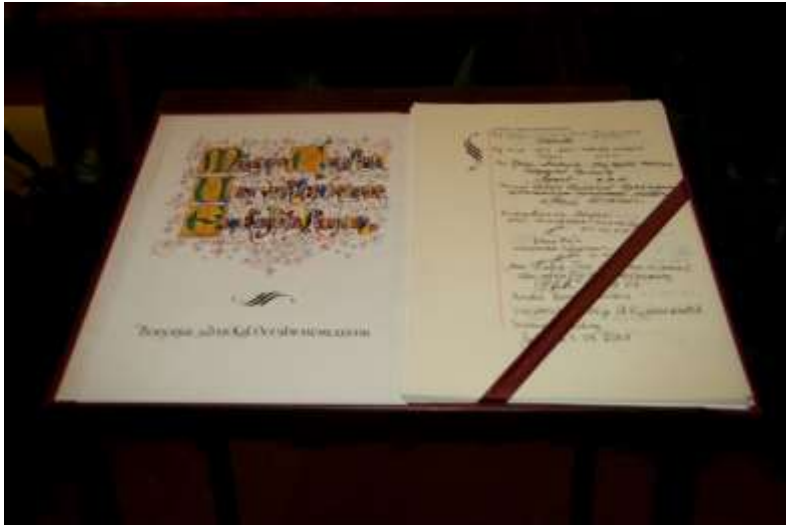


# Charter & Code - 2015



HR EXCELLENCE IN RESEARCH





# Internationalization

- Bilateral/multilateral agreements
- International educational projects
- Mobility
- Membership in networks of cooperation
- Seminars, round tables, summer schools, meetings, visits
- Lectures of visiting professors and other guests
- Cooperation with embassies and foreign governments (scholarships, study visits)

Since 1997 engaged in various international projects:

**Erasmus+** (60 KA1 ICM and 15 KA2 CBHE)

**CEEPUS** programme

**TEMPUS** (89 projects)

**Erasmus Mundus** (6 projects)

# University consists of 17 faculties

- **Faculty of Electrical Engineering**
- Faculty of Technology
- Faculty of Law
- Faculty of Economics
- Faculty of Mechanical Engineering
- Faculty of Medicine
- Faculty of Forestry
- **Faculty of Agriculture**
- Faculty of Philosophy
- Faculty of Architecture, Civil Engineering and Geodesy
- Faculty of Natural Sciences and Mathematics
- Academy of Arts
- Faculty of Physical Education and Sport
- Faculty of Philology
- Faculty of Political Science
- Faculty of Mine Engineering
- Faculty of Security Science





The Faculty was established on 10th October 1992 in the premises of former School of Agriculture in Banja Luka.

There are 12 departments of which 6 belong to the Crop Production Study Program, 4 to Animal Production Study Program and 2 to Agricultural Economy and Rural Development Study Program.

The Faculty offers first cycle or Bachelor Studies, second cycle – Master and third cycle – Doctoral Studies.



Scientific research is carried out in six Institutes like follows: Institute for Horticulture, Institute for Farming, Institute for Agroecology and Soil, Institute for Animal Husbandry, Institute for Agricultural Economy and Rural Development, Institute for Reproduction of Domestic Animals. Within six Institutes there are 17 Laboratories, two Computer Rooms and Republic Experimental Educational Center in support of scientific research and teaching.



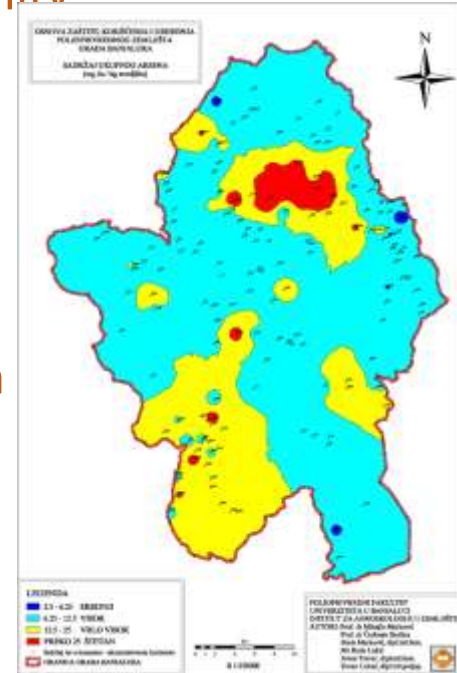


УНИВЕРЗИТЕТ У БАЊОЈ ЛУЦИ  
UNIVERSITY OF BANJA LUKA  
ПОЉОПРИВРЕДНИ ФАКУЛТЕТ  
FACULTY OF AGRICULTURE



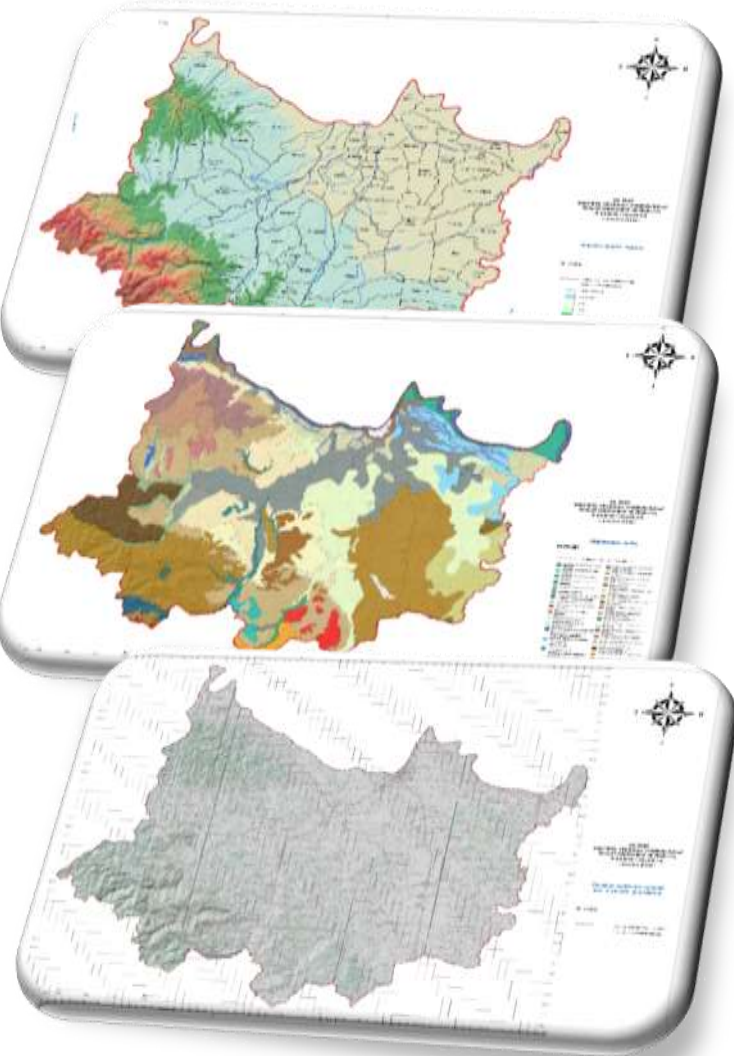
## Geographic Information System:

- Monitoring of soil quality (SOM, N, P, K, C....)
- land evaluation
- land capability
- soil suitability
- agro ecological zoning
- assessment of erosion
- flood protection
- water management



## Remote sensing:

- land use
- land cover
- interpretation of satellite images and aerial photographs
- soil moisture (MODIS)



1962



The oldest faculty of the University of Banja Luka, founded in 1962. Grew out of the Electronics and Telecommunications department of the Technical Faculty.



#### Departments:

- Electronics and Telecommunication,
- Computer Engineering and Informatics,
- Power Engineering and Industrial Systems.

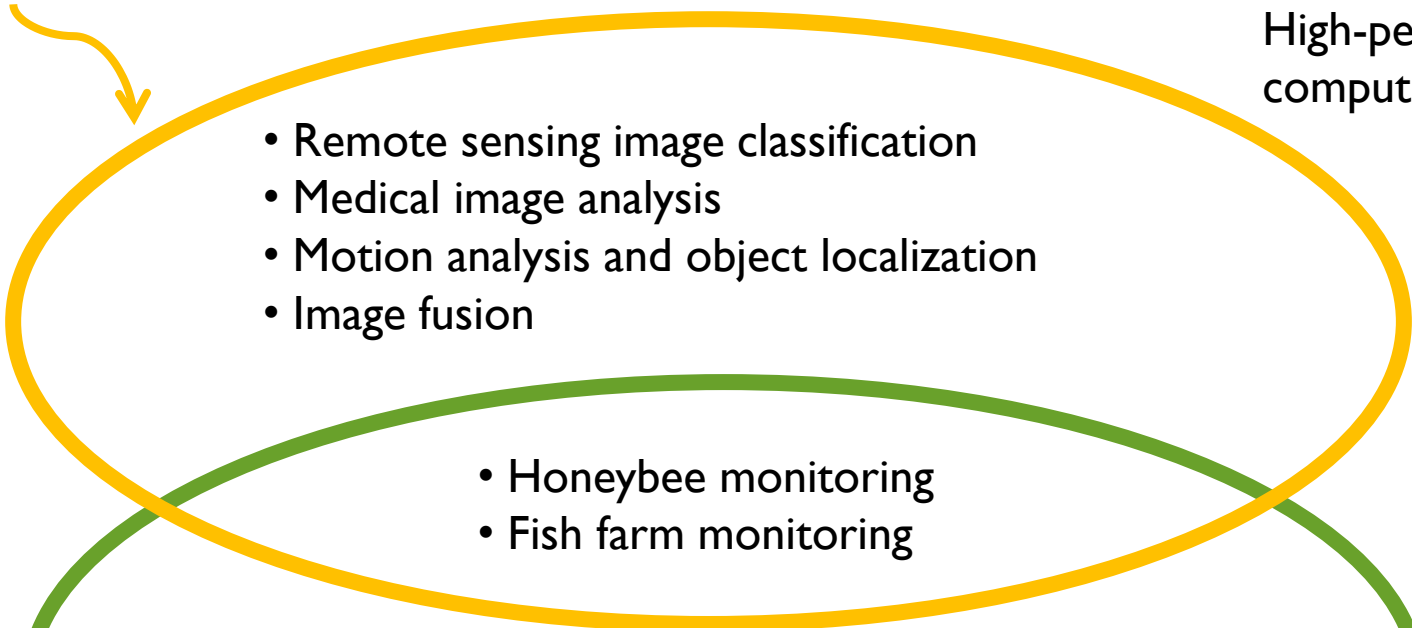
From its foundation until today, the number of freshman varied between 120 and 550, while over 2000 students graduated. The study process is led by more than 40 full-time teachers and assistants of the University of Banja Luka, along with many teachers from other universities from WB countries and over the Europe.

[www.etf.unibl.org](http://www.etf.unibl.org)



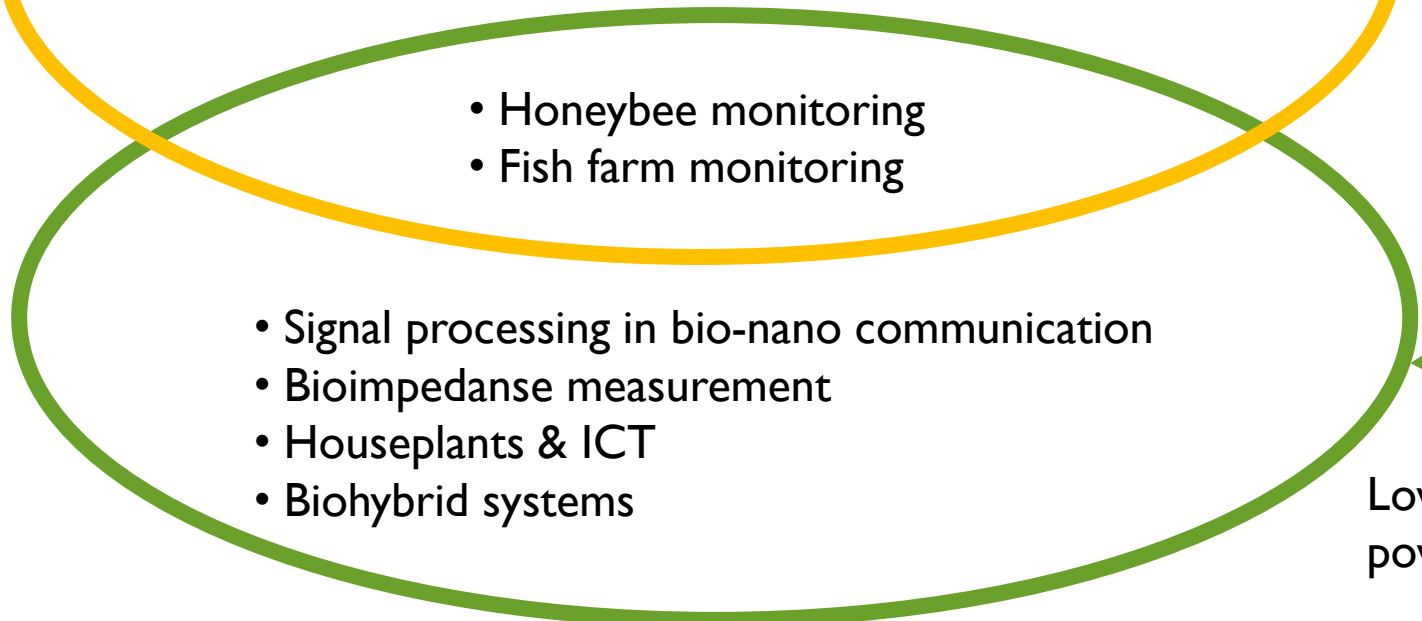
Signal Processing Group

Image and video processing



- Remote sensing image classification
- Medical image analysis
- Motion analysis and object localization
- Image fusion

High-performance computing



- Honeybee monitoring
- Fish farm monitoring

Bio-ICT

- Signal processing in bio-nano communication
- Bioimpedance measurement
- Houseplants & ICT
- Biohybrid systems

Low-cost & low-power solutions

---

**Thank you !**



VITALISING ICT RELEVANCE IN  
AGRICULTURAL LEARNING

---